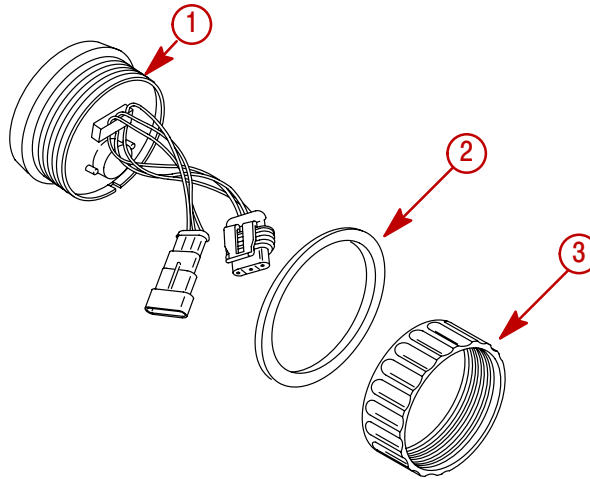


---

# SYSTEM LINK GAUGE INSTALLATION

---

## Components Contained in Kit:



### 52mm Diameter Gauges:

1	System Link Gauge	1
2	Seal 52 mm Dia. (12-879925)	1
3	Retainer Nut (11-879900)	1

### 85mm Diameter Gauges:

1	System Link Gauge	1
2	Seal 85 mm Dia. (12-859656)	1
3	Retainer Nut (11-859073)	1

## Special Instructions

Clean lens with water only.

## Installation Information

### **⚠ WARNING**

**Disconnect both battery cables at battery before attempting to install gauges**

Before cutting any holes, check area behind dashboard for obstructions (braces, cables, wiring, etc.)

#### CUTTING TIPS

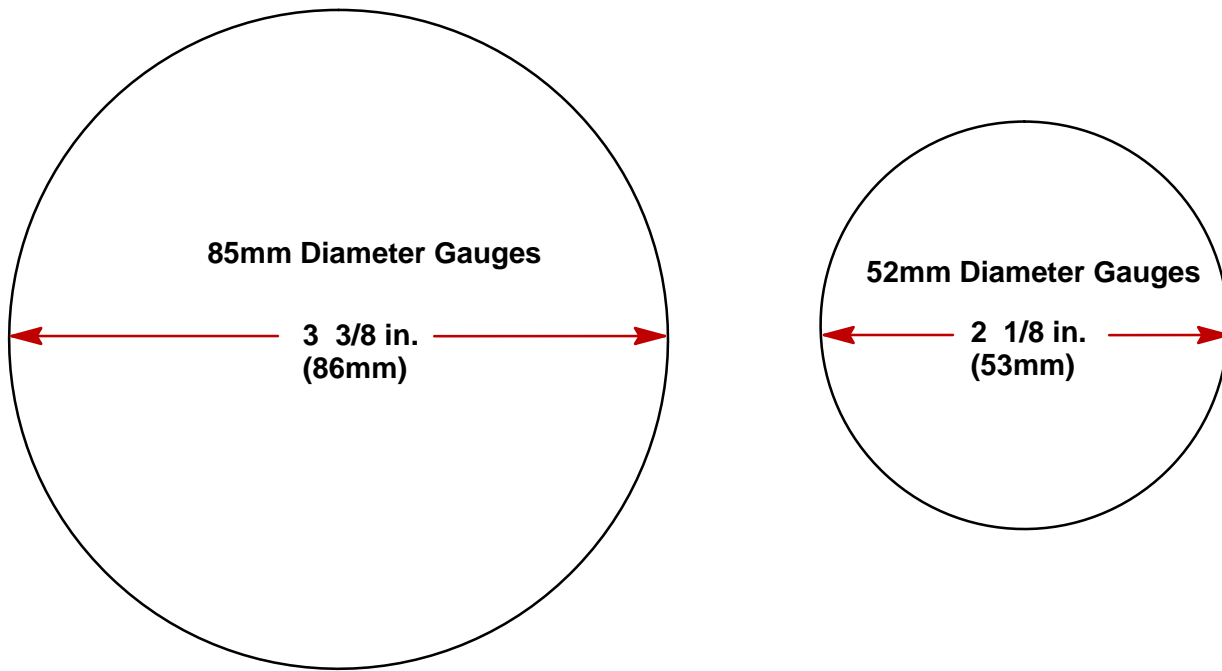
**Fiberglass** – apply masking tape to area to be cut to prevent dashboard from cracking.

**Vinyl Covered** – Remove vinyl from area to be cut with razor blade to keep vinyl from tearing.

## Gauge Installation

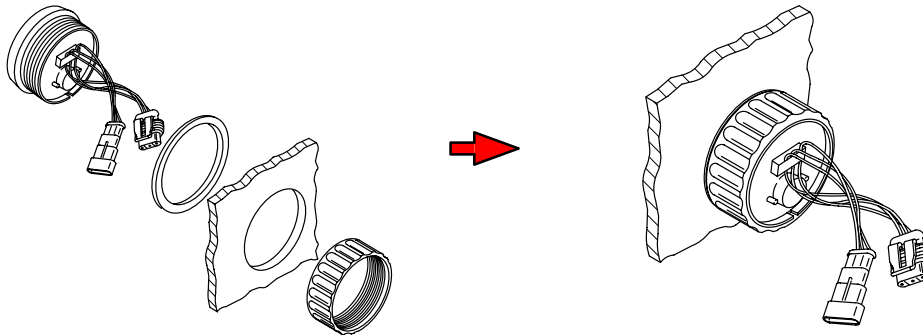
1. Select a location for the gauges that affords good visibility and accessibility from behind dashboard.

2. Drill mounting hole using a hole saw.



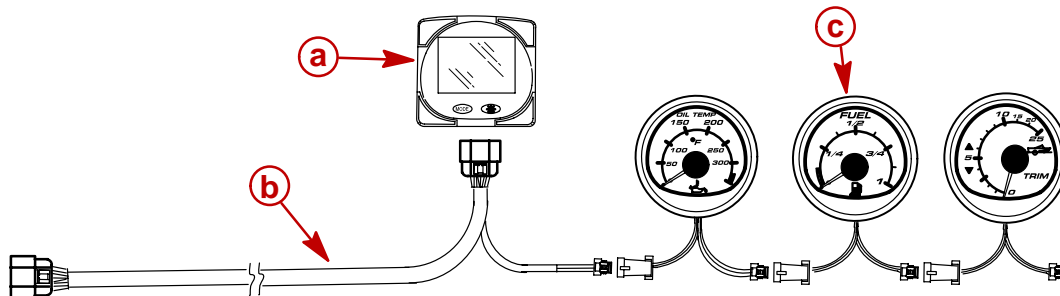
3. Place gauge into dashboard and secure with retainer nut.

**NOTE:** For thick dashboards, reverse the retainer nut for additional thread engagement.



## Wiring

**NOTE:** Extension Wiring Harnesses for the System Link Gauges are available in 3ft, 10ft and 30ft lengths. (84-880756b-3,10,30)



- a** - SmartCraft Product – System Monitor, System Tach or System View
- b** - System Wiring Harness
- c** - System Link Gauge(s)